



Installation Instructions

2.5" Basic Kit

1997-2002 JEEP TJ 4WD

FTS24000

PARTS AND HARDWARE LIST:

Qua	Part #	Description
2	FT50064	Fr. Coil Adjuster
2	FT50065	RR Coil Adjuster
2	FT50027	Bump Stop
1	FT2301	Spanner Wrench
4	FT2300-1	Spanner Nut
4	FT2300-2	Thrust Washer
4	FT2300-4	Urethane Coil Isolator
2	10130151082	10mm-1.5mmX130mm Bolt Gr.8.8
2	43000005252	7/16" Split Washer
2	43000005052	7/16" SAE Flat Washer
6	25282502200	Set Screw frt.
1	FTLOCK	Thread Lock Compound

DO NOT ALTER THE FINISH OF THESE COMPONENTS, EXAMPLE- CHROMING, ZINC PLATING OR PAINTING. CHANGING THE FINISH CAN CAUSE STRUCTURAL FATIGUE OF COMPONENTS.

TOOL LIST: (NOT INCLUDED)

- FLOOR JACK & JACK STANDS
- ASSORTED METRIC AND S.A.E SOCKETS, & WRENCHES
- TORQUE WRENCH

CHECK ALL PARTS INCLUDED IN THIS KIT TO THE PARTS LIST ABOVE BEFORE BEGINNING INSTALLATION OF THE KIT. IF ANY PIECES ARE MISSING, CONTACT FABTECH AT 909-597-7800

VEHICLES THAT WILL RECEIVE OVERSIZED TIRES SHOULD CHECK BALL JOINTS, TIE RODS ENDS AND IDLER ARM EVERY 2500-5000 MILES FOR WEAR AND REPLACE AS NEEDED

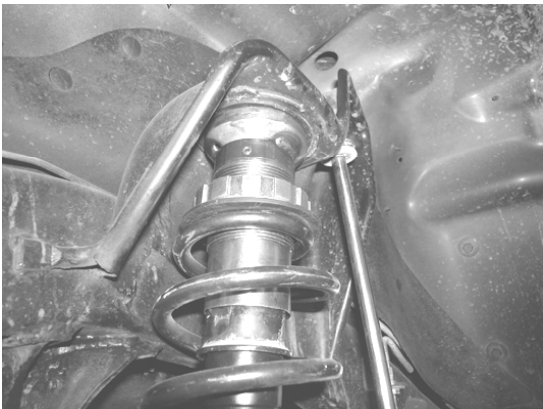
READ ALL INSTRUCTIONS THOROUGHLY FROM START TO FINISH BEFORE BEGINNING INSTALLATION! IF THESE INSTRUCTIONS ARE NOT PROPERLY FOLLOWED, SEVERE FRAME, DRIVELINE AND / OR SUSPENSION DAMAGE MAY RESULT.

NOTE- PRIOR TO THE INSTALLATION OF THIS SUSPENSION SYSTEM A FRONT END ALIGNMENT MUST BE PERFORMED AND RECORDED. DO NOT INSTALL THIS SYSTEM IF THE VEHICLE ALIGNMENT IS NOT WITHIN FACTORY SPECIFICATIONS. CHECK FOR FRAME AND SUSPENSION DAMAGE PRIOR TO INSTALLATION. THIS SUSPENSION SYSTEM DOES NOT REQUIRE WELDING FOR INSTALLATION. DO NOT WELD ANY OF THESE COMPONENTS.

THE INSTALLATION OF THIS SUSPENSION SYSTEM SHOULD BE PERFORMED BY A PROFESSIONAL MECHANICS.

FRONT SUSPENSION INSTRUCTIONS:

1. With the vehicle on level ground take measurements of the vehicles ride height at all four wheels. Record measurements on the supplied measurement record sheet. These will be used later to set the proper ride height
2. With the vehicle on level ground set the emergency brake and block the rear tires. Jack up the front end of the truck and support the frame rails with jack stands. **NEVER WORK UNDER AN UNSUPPORTED VEHICLE!** Remove the front tires. Support the front axle, do not allow to hang freely.
3. Working from the driver side of the truck, remove the front shock, save lower mount hardware, and discard upper.
4. Remove the factory coil spring, and save, you will need to allow the front axle to hang freely to remove the coil spring. Remove the factory upper coil isolator, and discard.
5. Remove the factory rubber bump stop, and discard. Remove the bump stop mounting cup, save hardware.
6. Locate the Fabtech adjuster sleeve FT50064. Slide the adjuster sleeve over the factory bump stop mount. Using three of the supplied Allen head set screws, secure the adjuster to the bump stop mount. Reinstall the factory bump stop cup.
7. Locate the new Fabtech Urethane bump stop FT50027 and install in to the factory location.
8. Locate the Fabtech Spanner Nut FT2300-1. Thread the spanner nut on to the adjuster sleeve approx. 1" from the top. **Note: This is only a starting point for ride height adjustment. The final ride height will be adjusted when the installation of this kit is complete.**
9. Locate the Fabtech Thrust Washer FT2300-2 and Fabtech Coil Isolator FT2300-4. Slide these over the new adjuster sleeve with the thrust washer against the spanner nut and the coil isolator below the thrust washer. **SEE DRAWING ON THE LAST PAGE FOR COMPLETE ASSEMBLY DRAWING.**
10. Reinstall the factory coil spring. SEE PHOTO BELOW.



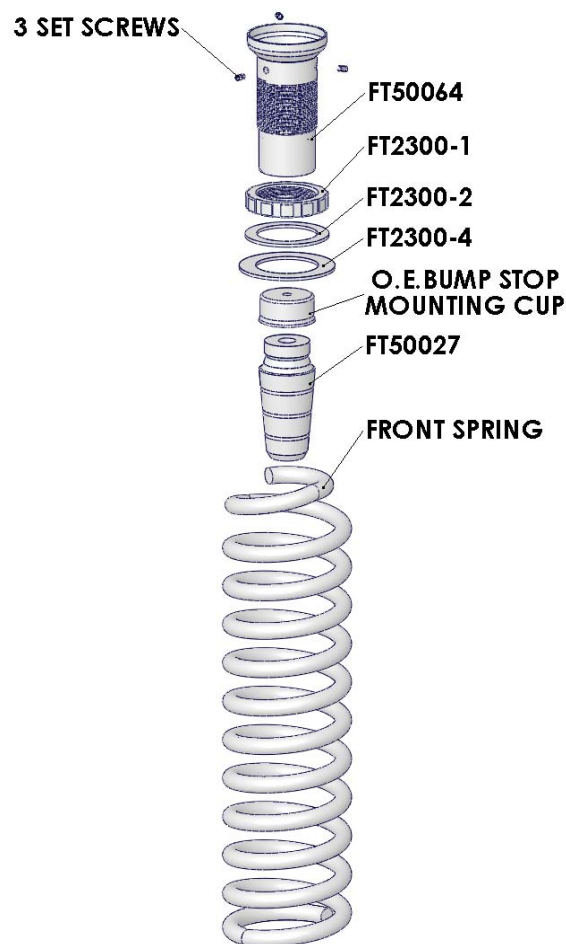
11. Install the Fabtech shock FTS7170. (Not included in the kit). Use the supplied upper hardware and the factory lower hardware.
12. Repeat steps two through eleven on the passenger side of the truck.
13. Install front tires and wheels. Torque lug nuts to wheel manufacturers specifications. Turn wheels left to right to check for proper clearance of brake lines, ABS lines, and fenders.

REAR SUSPENSION INSTRUCTIONS:

14. Jack up the rear end of the vehicle and support the frame rails just in front of the rear bumper with jack stands. **NEVER WORK UNDER AN UNSUPPORTED VEHICLE!** Remove the rear tires. Support the rear axle, do not allow to hang freely.
15. Working from the driver side of the truck, remove the factory shock and discard, save lower mount hardware.
16. Remove the factory coil spring, and save, you will need to allow the axle to hang freely to remove the coil spring. Remove the factory upper coil isolator, and discard.
17. Remove the factory rubber bump stop, and save.
18. Remove the factory bolt securing the bump stop cup to the bump stop mount, discard bolt.
19. Locate the Fabtech adjuster sleeve FT50065. Slide the adjuster sleeve over the factory bump stop mount, than install the factory bump stop cup on to the end of the Fabtech adjuster sleeve with the supplied 10mm-1.5x130mm bolt, flat washer, and split washer. Use the supplied thread locking compound on this bolt to insure tightness.
20. Locate the factory bump stop and reinstall in to the factory location. SEE PHOTO BELOW.



21. Locate the Fabtech Spanner Nut FT2300-1. Thread the spanner nut on to the adjuster sleeve approx. 1" from the top. **Note: This is only a starting point for ride height adjustment. The final ride height will be adjusted when the installation of this kit is complete.**
22. Locate the Fabtech Thrust Washer FT2300-2 and Fabtech Coil Isolator FT2300-4. Slide these over the new adjuster sleeve with the thrust washer against the spanner nut and the coil isolator below the thrust washer. **SEE DRAWING ON THE LAST PAGE FOR COMPLETE ASSEMBLY DRAWING.**
23. Reinstall the factory coil spring.
24. Install the Fabtech shock FTS7171. (Not included in the kit) Use the supplied factory upper hardware and the factory lower hardware.
25. Install rear tires and wheels. Torque lug nuts to wheel manufactures specifications.
26. With the truck on level ground locate you height measurements prior to the installation and adjust the spanner nuts with the supplied spanner wrench to the proper ride height. **DO NOT EXCEED 2.5" OF ADDITIONAL HEIGHT OVER STOCK.**
27. Recheck all nuts and bolts for proper torque specifications before driving. Realign truck to factory specifications and drive truck.



FRONT ASSEMBLY SHOWN ABOVE



REAR ASSEMBLY SHOWN ABOVE

HEIGHT MEASUREMENT RECORDS

FRONT DRIVER:
STOCK _____

LIFTED _____

REAR DRIVER:
STOCK _____

LIFTED _____

FRONT PASSENGER:
STOCK _____

LIFTED _____

REAR PASSENGER:
STOCK _____

LIFTED _____

RETORQUE ALL NUTS, BOLTS AND LUGS AFTER 50 MILES AND PERIODICALLY THEREAFTER.

For technical assistance call: 909-597-7800

Fabtech Motorsports Suspension Products

Product Warranty and Warnings-

Fabtech provides a Limited Lifetime Warranty to the original retail purchaser who owns the vehicle, on which the product was originally installed, for defects in workmanship and materials.

The Limited Lifetime Warranty excludes the following Fabtech items; bushings, bump stops, ball joints, tie rod ends, limiting straps, cross shafts, heim joints. These parts are subject to wear and are not considered defective when worn. They are warranted for 60 days from the date of purchase for defects in workmanship.

Coil over take apart shocks are considered a serviceable shock with a one year warranty on leakage only. Service seal kits are available separately for future maintenance. All other shocks are covered under our Limited Lifetime Warranty.

Fabtech does not warrant any product for finish, alterations, modifications and/or installation contrary to Fabtech's instructions. Alterations to the finish of the parts including but not limited to painting, powdercoating, plating and/or welding will void all warranties. Some finish damage may occur to parts during shipping which is considered normal and is not covered under warranty.

Fabtech products are not designed nor intended to be installed on vehicles used in race applications or for racing purposes or for similar activities. (A "RACE" is defined as any contest between two or more vehicles, or any contest of one or more vehicle against the clock, whether or not such contest is for a prize). This warranty does not include coverage for police or taxi vehicles, race vehicles, or vehicles used for government or commercial purposes. Also excluded from this warranty are sales outside of the United States of America.

Installation of most suspension products will raise the center of gravity of the vehicle and will cause the vehicle to handle differently than stock. It may increase the vehicle's susceptibility to a rollover, on road and off road, at all speeds. Extreme care should be taken to operate the vehicle safely at all times to prevent rollover or loss of control resulting in serious injury or death. Fabtech front end Desert Guards may impair the deployment or operation of vehicles equipped with supplemental restraining systems/air bag systems and should not be installed if the vehicle is equipped as so.

Fabtech makes every effort to ensure suspension product compatibility with all vehicles listed in the catalog, but due to unknown auto manufacturers production changes and/or inconsistencies by the auto manufacturer, Fabtech cannot be responsible for 100% compatibility, including the fitment of tire and wheel sizes listed. The Tire and Wheel sizes listed in Fabtech's catalog are only a guideline for street driving with noted fender trimming. Fabtech is not responsible for damages to the vehicle's body or tires.

Fabtech's obligation under this warranty is limited to the repair or replacement, at Fabtech option, of the defective product only. All costs of removal, installation or re-installation, freight charges, incidental or consequential damages are expressly excluded from this warranty. Fabtech is not responsible for damages and/or warranty of other vehicle parts related or non related to the installed Fabtech product. This warranty is expressly in lieu of all other warranties expressed or implied. This warranty shall not apply to any product that has been subject to accident, negligence, alteration, abuse or misuse as determined by Fabtech.

Fabtech suspension components must be installed as a complete system including shocks as shown in our current catalog. All warranties will become void if Fabtech parts are combined and/or substituted with other aftermarket suspension products. Combination and/or substitution of other aftermarket suspension parts may cause premature wear and/or product failure resulting in an accident causing injury or death. Fabtech does not warrant products not manufactured by Fabtech.

Installation of Fabtech product may void the vehicles factory warranty; it is the consumer's responsibility to check with their local vehicle's dealer for warranty disposition before the installation of the product.

It is the responsibility of the distributor and/or the retailer to review all warranties and warnings of Fabtech products with the consumer prior to purchase.

Fabtech reserves the right to supercede, discontinue, change the design, finish, part number and, or application of parts when deemed necessary without written notice. Fabtech is not responsible for misprints or typographical errors within the catalog or price sheet.