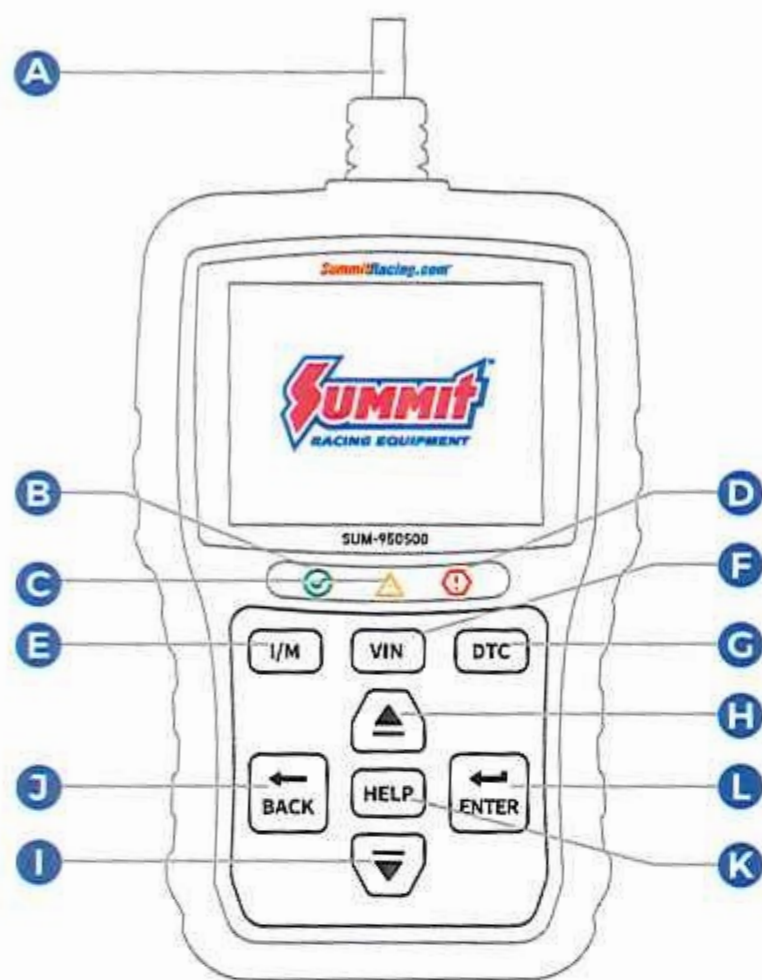


## 1. Diagnostic operation



- A** **OBDII Cable**  
Provides communication for vehicle DLC.
- B** **Green LED Display**  
Indicates the engine system is working normally.
- C** **Yellow LED Display**  
Shows the tool finds a possible problem.
- D** **Red LED Display**  
Indicates there are some problems in one or more of the vehicle's systems.
- E** **I/M Key**  
Quick checks state emissions readiness and drive cycle verification.
- F** **VIN Key**  
Quick checks the VIN code of vehicle.
- G** **DTC Key**  
Quick checks the DTC code.
- H** **UP Key**  
Scroll the menu.
- I** **DOWN Key**  
Scroll the menu.
- J** **BACK Key**  
Cancels an action and returns to previous screen or level.
- K** **HELP Key**  
Accesses to the Help function and it is also used to update the code reader when long pressed.
- L** **ENTER Key**  
Confirms an action or movement and moves to next level.

## 2. Before start diagnosis, please make sure

- 1** The ignition switch is turned to ON position
- 2** Engine is off
- 3** 10 to 14 volt vehicle power



Never try to provide power for the code reader from USB connection when the code reader is communicating with a vehicle.

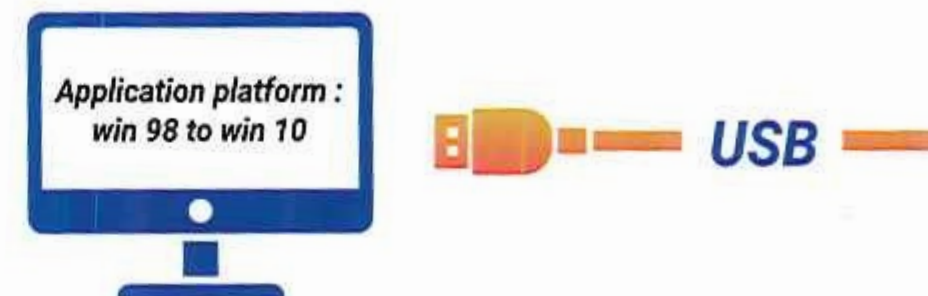


Don't connect or disconnect the equipments while the ignition is on or the engine is running.

## 3. Powering up the scanner

Before using the code reader, make sure to provide power to the code reader. The unit operates on any of the following sources:

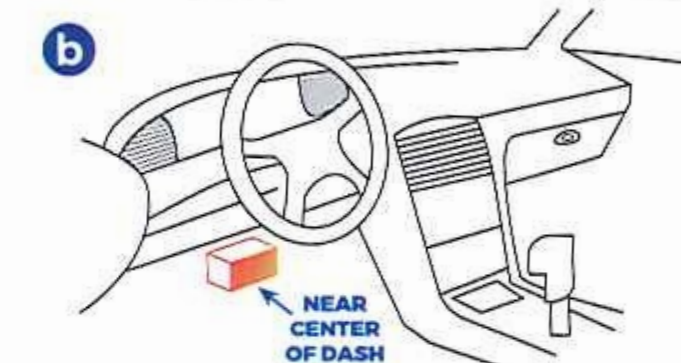
### 3.1. USB connection to computer



### 3.2. 12-volt vehicle power



Turn the ignition off.



Locate the data link connector (DLC) under the dash on the driver side of the vehicle.



Switch the ignition key to the ON position.



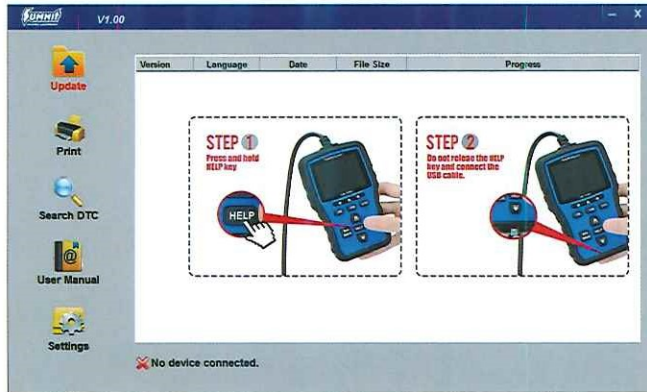
The code reader automatically boots up.



## 4. Update

Before updating, please make sure your network works correctly and download the SUMMIT updater from our website: <https://www.summitracing.com/parts/sum-950500>;

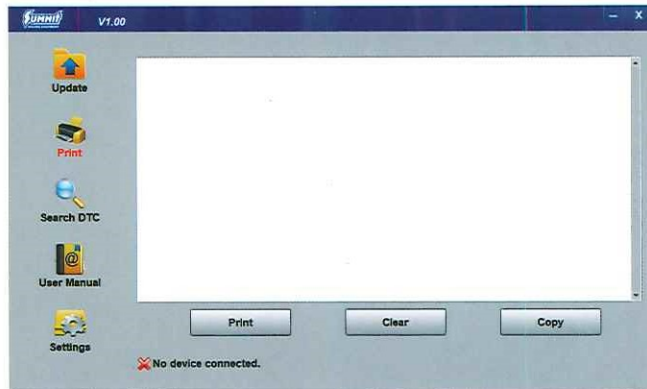
- 4.1. Double click SUMMIT updater.
- 4.2. Click Setting and select the language you want to update.
- 4.3. Press and hold help key before connect to the computer.
- 4.4. Don't release the help key and connect the scanner to the computer with the USB cable.
- 4.5. Tick the file to update.



## 5. Print test results

The Print Data function is used to print test results through computer.

- 5.1. Connect the scanner to the computer with the USB cable.
- 5.2. Double click SUMMIT updater.
- 5.3. Click print in the menu, then choose files you want to print and click print button.



## 6. Battery Function

Selects battery icon in the menu to test and read the voltage of battery.

## 7. Service and support

Website: [www.summitracing.com](http://www.summitracing.com) Tel.: 330-294-9747

For more details of operations, please refer to the user manual in update tool or our website.

## 8. Warranty and service

### Limited One Year Warranty

The warranty is 1 year for hardware, which does not cover damage caused by human factors, accidents, misuse of the product. Under the warranty, customers can ask for replacement due to non-human damage.