



Installation Instructions

Rear Bumper

Product Number: W1050
Application: '03-Current Ram 2500-3500

SAFETY

Your safety and the safety of others is very important.

- In order to help you make informed decisions about safety, we have provided installation instructions and other information.
- These instructions alert you to potential hazards that could hurt you or others.
- Please do a job safety analysis (JSA) before each task to identify potential hazards for your situation and remove/protect against them.
- You must use your own good judgment, and take your time.

Read and understand all safety precautions and instructions before installing this product.

THIS PRODUCT IS FOR OFFROAD USE ONLY. ALL LIABILITY FOR INSTALLATION AND USE RESTS WITH THE OWNER.

CARELESS INSTALLATION AND OPERATION CAN RESULT IN SERIOUS INJURY OR EQUIPMENT DAMAGE.

Injury hazard

Failure to observe these instructions could lead to severe injury or death.

- Always** remove jewelry and wear eye protection.
- Always** use extreme caution when jacking up a vehicle for work. Set emergency brake and use tire blocks. Locate and use the vehicle manufacturers designated lifting points. Use jack stands.
- Always** use appropriate and adequate care in lifting components into place.
- Always** insure components will remain secure during installation and operation.
- Always** wear safety glasses when installing this kit. A drilling operation will cause flying metal chips. Flying chips can cause serious eye injury.
- Always** use extreme caution when drilling on a vehicle. Thoroughly inspect the area to be drilled (on both sides of material) prior to drilling, and relocate any objects that may be damaged.
- Always** use extreme caution when cutting and trimming during fitting.
- Always** tighten all nuts and bolts securely per installation instructions.
- Always** route electrical cables carefully. Avoid moving parts, components that become hot and rough or sharp edges.
- Always** insulate and protect all exposed wiring and electrical terminals.
- Always** perform regular inspections and maintenance on mounts and related hardware.





Installation Instructions

Rear Bumper

Product Number: W1050

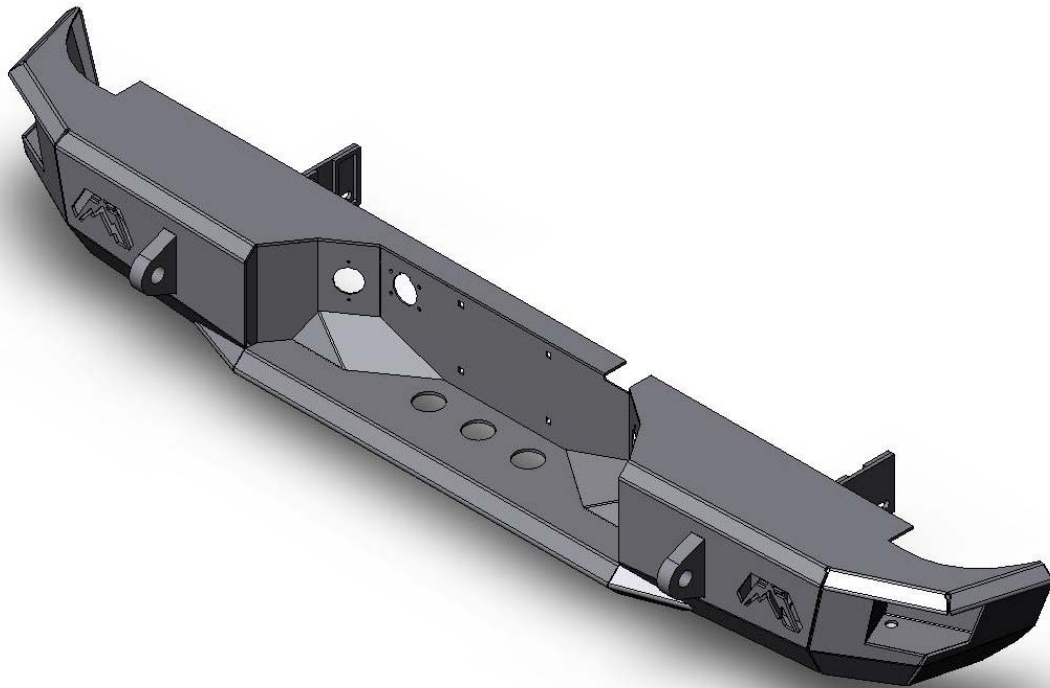
Application: '03-Current Ram 2500-3500

I. Overview

Congratulations on your new purchase of the industries' best and most stylish Dodge Bumper! This bumper has been **engineered** for strength while keeping the weight down.

Your bumper was designed in 3-D from digitized data, CNC laser cut, fabricated, and powder coated... all in the U.S.A.

Enjoy the fit and finish of a quality Dodge Bumper from Fab Fours Inc.





Installation Instructions

Rear Bumper

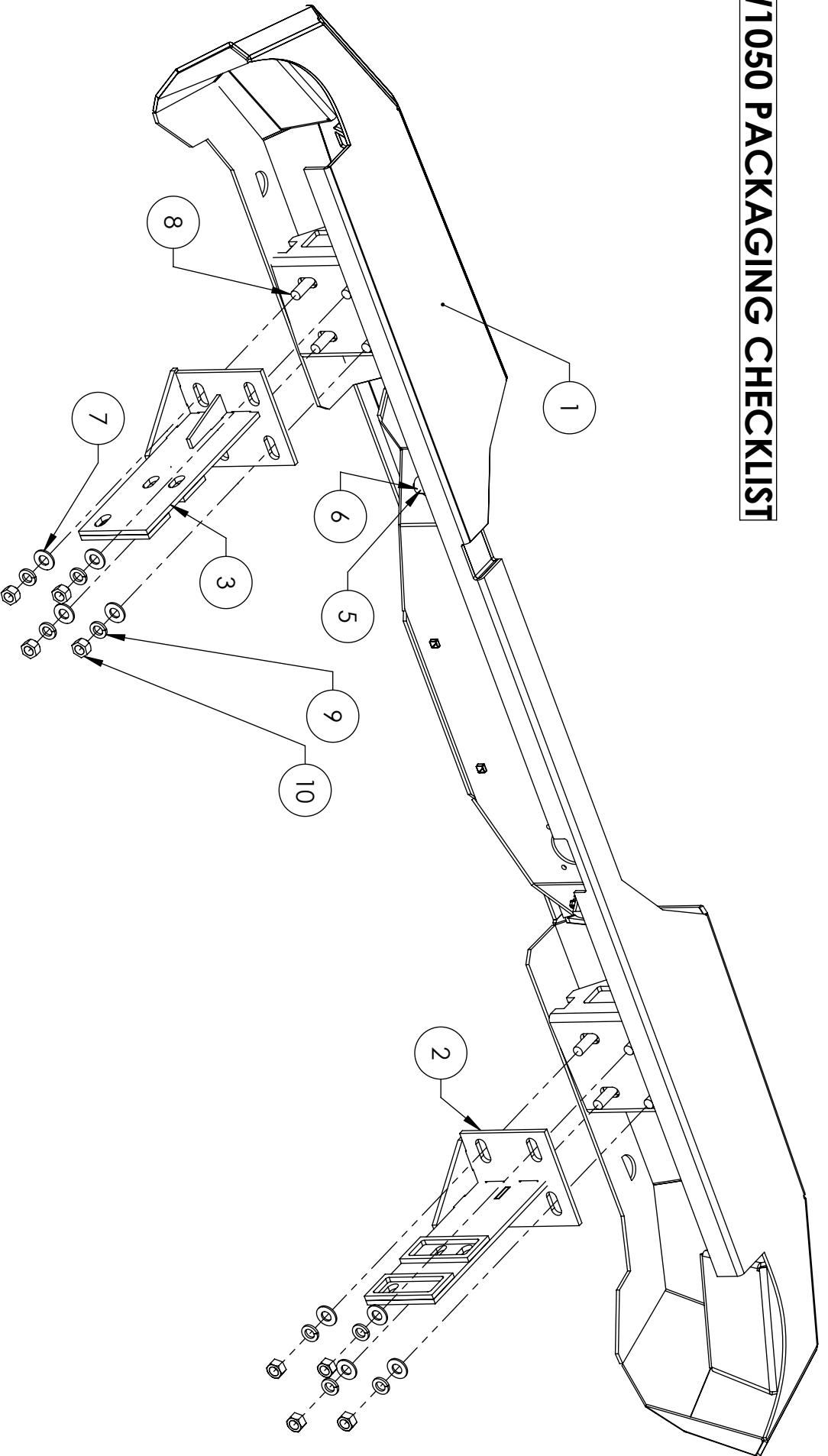
Product Number: W1050

Application: '03-Current Ram 2500-3500

II. Parts List



W1050 PACKAGING CHECKLIST



ITEM	PART NUMBER	DESCRIPTION	QTY.	CHECK
1	20035	DR03-W Rear Bumper Weldment	1	
2	20036	DR03-W Frame Mounting Brkt. - L	1	
3	20111	DR03-W Frame Mounting Brkt. - R	1	
4	60854	#8 -32 UNC THREAD x 3/4" LENGTH BUTTON HEAD SOCKET CAP SCREW, 18-8 STAINLESS	4	
5	61152	#8 SCREW DIA. SAE STANDARD FLAT WASHER	4	
6	61301	#8-32 NYLON INSERT LOCK NUT	4	
7	61164	1/2" SCREW DIA. SAE STANDARD FLAT WASHER	16	
8	60120	1/2 -13 UNC THREAD x 1 1/2" LENGTH HEX HEAD CAP SCREW, GRADE 8	8	
9	61307	1/2 SCREW DIA REGULAR SPRING LOCK WASHER	8	
10	61238	1/2" -13 THREAD HEX NUT, GRADE 8	8	
11	61302	License Plate Lamp, Hella 1378, Black	2	
12	61303	License Plate Insert Nut	4	



Installation Instructions

Rear Bumper

Product Number: W1050
Application: '03-Current Ram 2500-3500

III. Tools Needed

- 15mm socket
- 21mm socket
- T-25 torx
- 3/4" Socket
- 3/4" Wrench
- Socket wrench

IV. Removal

- A) Remove license plate (to reveal two mounting bolts).
- B) Remove the (4) Torx screws from the trailer plug, pull plug through bumper, slide red tab toward wires and remove trailer plug.



Picture #1

- C) Remove license plate light plugs by sliding red tab toward wires and pressing down on tab.
- D) Locate and remove (2) bolts above frame-rails using 15mm socket.



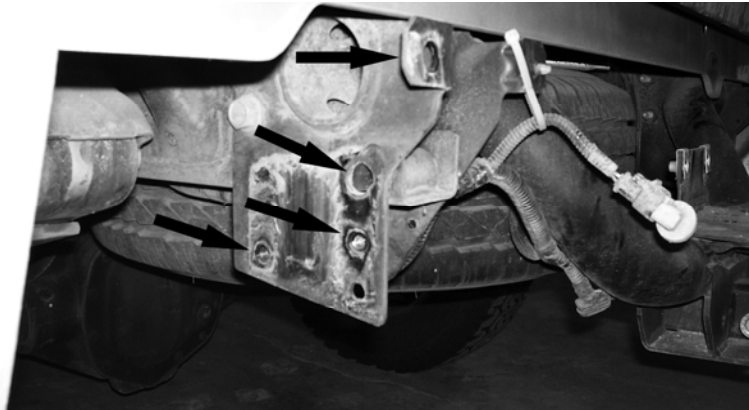


Installation Instructions Rear Bumper

Product Number: W1050

Application: '03-Current Ram 2500-3500

- E) Pull Christmas-tree clips (holding wire harness) from each frame rail in order to clear tab-nut.
- F) Remove (8) stock fasteners from frame-rails using 15mm and 21mm sockets (4 on each side).



Picture #2

V. Lighting

- A) Cut brown wire (near connector), strip ¼" from the wire insulation, and affix male terminal. Repeat for other light assembly.



Picture #3





Installation Instructions

Rear Bumper

Product Number: W1050

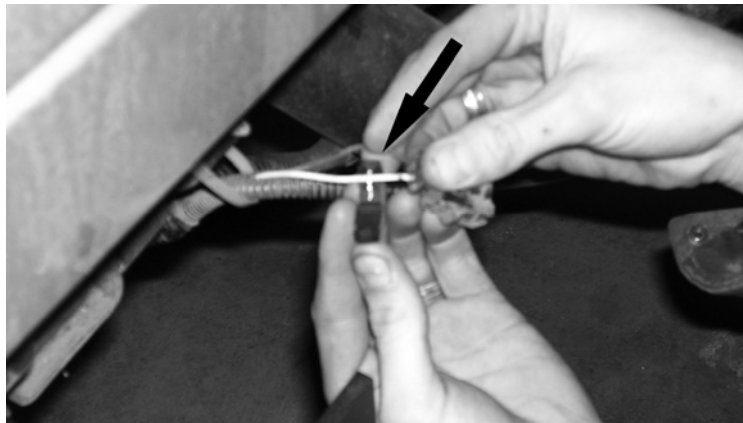
Application: '03-Current Ram 2500-3500

- ❑ B) Install license plate lights by first separating the chrome outer bezel from light assembly. Clamp bumper between chrome bezel (outside) and light assembly (inside) using the supplied screws.



Picture #4

- ❑ C) Expose white-yellow wire on each license plate wire harness (OEM) by removing electrical tape, and trimming loom 1/2". Squeeze red Scotchlok connector together (over white-yellow wire) making sure the connector snaps fully. Repeat for other side.



Picture #5





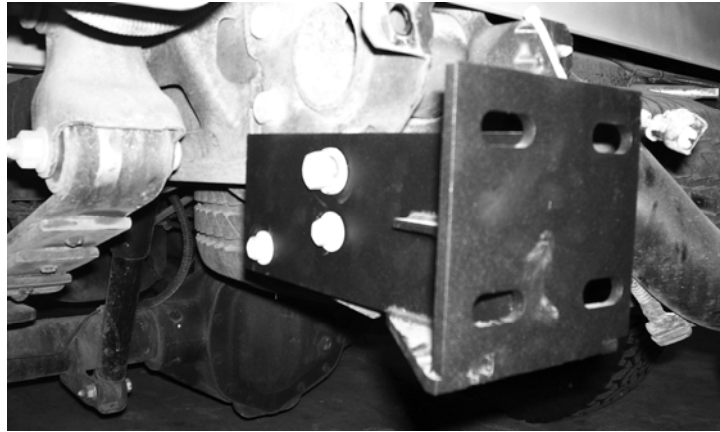
Installation Instructions

Rear Bumper

Product Number: W1050
Application: '03-Current Ram 2500-3500

VI. Installation

- ❑ A) Install bumper mounts (finger tight) onto frame rails as shown using stock mounting hardware. Verify that stepped faces contact frame rails and that the triangular reinforcement plate is on the bottom. Repeat for other side.



Picture #6

- ❑ B) Bolt bumper to mounts using supplied hardware as shown in Parts List.



Picture #7

- ❑ C) Align bumper front to back and tighten frame mount fasteners (OEM).





Installation Instructions

Rear Bumper

Product Number: W1050

Application: '03-Current Ram 2500-3500

- D)** Align bumper height side-to-side, verify tailgate will clear while lowered, and tighten bumper mounting fasteners using $\frac{3}{4}$ " socket and wrench.
- E)** Plug in license plate light wires and secure to frame rails.
- F)** Install trailer plug in reverse order of removal.
- G)** Install license plate mounting inserts and install license plate.





Installation Instructions
Rear Bumper
Product Number: W1050
Application: '03-Current Ram 2500-3500

VII. Maintenance/Care

- Periodically check and tighten all nuts.
- Stripped, fractured, or bent bolts or nuts need to be replaced.

VIII. Contact Information

Fab Fours Inc.
10424 Rodney St.
Charlotte, NC 28134

Phone (866)-385-1905
Fax (866)-574-1424
Email Support@fabfours.com



More than expected... Better than expected

