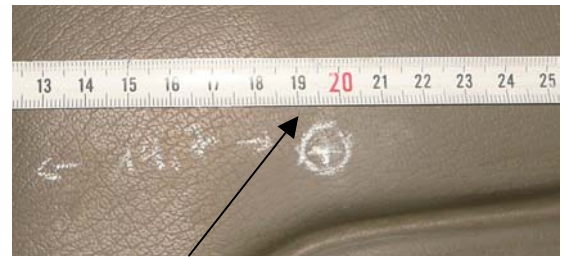


Wind Deflector BMW E 30 1005 A



2 cm from below

19,7cm from the side



Leather or Sky has to be cutted a drilling point before drilling!

Drill 14mm and move
with care and fit the hub
Drilling deepness is only 2 cm !!
Drilling deep only 2 cm!!!
Holes has to be same position on both sides of panels



Fit hub flat to the panel

Technical changes possible
Check all nuts and bolts in terms when using the wind blocker for right torque !
Item can be different to the pictures

EBA-QS: Rev : 00 Weyer

Stand 13.11.2009
Freigabe Weyer QS/ QMB :
QS-MB03.03.2010