



ThunderVolt 50 Universal Wire Set 10.4mm Termination Instructions

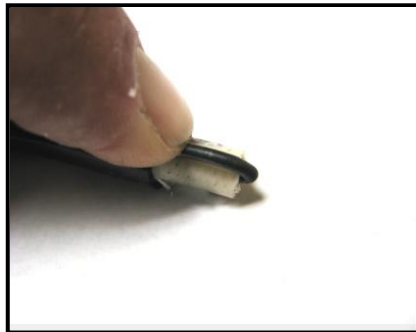
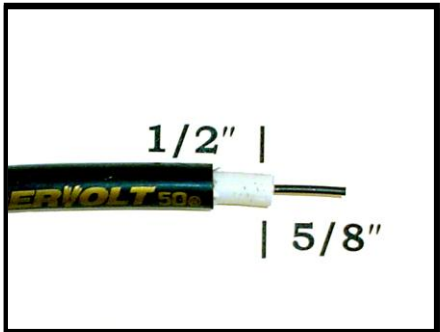
**READ ALL THE INSTRUCTIONS BEFORE ATTEMPTING TO TERMINATE
AND BOOT WIRE**

When replacing the spark plug wires on your engine, start with the longest wire and remove only one wire at a time. Use the removed wire(s) as a guide for the length to cut your new replacement wire(s). Mark the wire(s) at the proper length, and add ½” to be stripped. Also, allow additional length for distributor movement during timing adjustment. Your Thundervolt 50® Universal Wire Set contains 2 sets of distributor terminals and 90° boots. One set is for the early type conventional socket distributor caps, and one set is for the late type HEI distributor caps. Select the correct set for your vehicle’s style of distributor cap. There is an additional 3rd style boot/terminal included for the coil wire termination & installation. The photos below will show the installation of HEI style terminals/boots. The conventional socket style terminals/boots are installed in a similar manner with the terminal being bent 45 degrees prior to insertion into the boot. Finish the boot installation by bending the terminal to the full 90 degrees.



After you have measured and cut the wire to length, strip back 5/8” of insulation down to the center conductive core, **without damaging the core!** Next cut back ½” of the colored outer jacket without cutting the white inner jacket.

Carefully fold over the center conductor. Install this assembly into the terminal with the center conductive core touching the bottom of the terminal.



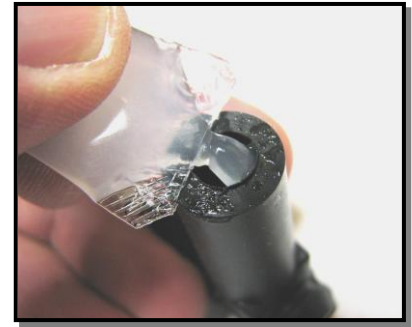
Form the tabs of the terminal to hold everything in place for crimping. Crimp the terminal with a Taylor #43400 or #43390 crimp tool or other appropriate crimp tool.



Slide a piece of heat shrink tubing over the crimped connection and apply heat with a heat gun or hair dryer.

WARNING: Heat Shrink is flammable – DO NOT OVERHEAT.

Put some of the silicone grease on the terminal, heat shrink tubing, and inside the boot as this will aid in the installation of the distributor boot.



Insert the terminal/wire into the boot and check for proper alignment. Make sure that the open end of the terminal is visible when looking down into the boot.



NOTE: The ThunderVolt wire will measure approximately 40 ohms / foot (+ or – 20%) resistance. Due to the sophisticated conductive nature of this core, it will require you run the engine for a minimum of 2 minutes, then immediately measure the resistance in order to get an accurate measurement.

Note: If you are planning a different wire routing than previously installed on your engine, it will be necessary to use the new wire(s) to determine the proper installed length for each cylinder.