

# *Seatbelt Solutions*

[www.seatbeltsolutions.com](http://www.seatbeltsolutions.com)



**3-Point Conversion Seatbelt Installation Guide for:**

**1964 - 1975 General Motors**

## **Chevrolet**

**Chevelle  
El Camino  
Monte Carlo  
El Camino  
Nova  
Caprice  
Impala**

## **Pontiac**

**LeMans  
GTO  
Firebird**

## **Oldsmobile**

**Cutlass  
Cutlass Supreme**

## **Buick**

**Skylark  
Sport Wagon  
Century  
Apollo**

# Seatbelt Solutions

## 1964-1975 General Motors Seat Belt Hardware Installation Kit Contents



90 Degree Bracket



1 1/2" x 7/16"x20 Bolts



2.5" Flat Washer



1" x 7/16"x20 Bolts



Stud Plate Bolts



7/16" Stud Plate



Pop Rivets



1/2" x 13 Lock Nut



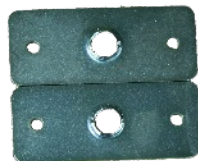
Nylon Step Washer



Nylon Washer



7/16"x20 Nylon Lock Nut



CA53 Shoulder Plate



7/16" Bolt



7/16" Flat Washer



Camaro Bracket

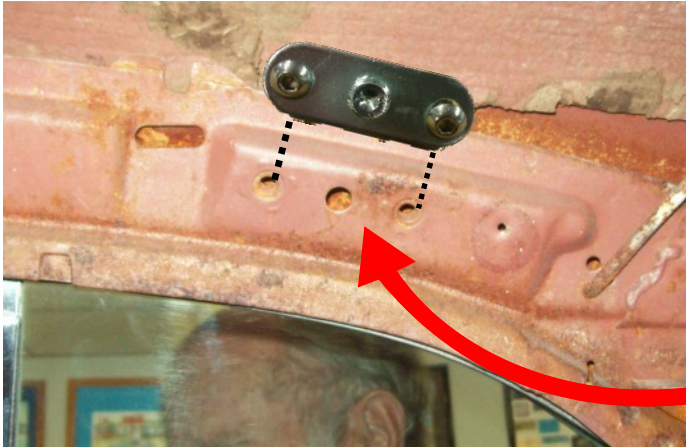
The hardware included in this kit has been designed to work with multiple years of General Motors vehicles. If your vehicle has existing anchor mounting points installed you may not need all of the provided hardware.

NOTE: This is an installation guide only, designed to aide you during the process of installing your new seat belts. Some installations may not be covered therefore it will be the installers responsibility to determine the safest mounting location.

Seatbelt Solutions, Inc, nor our vendors, bear any responsibility for improper installations by the end user or professional installer. We have designed this installation guide to be as informative and accurate as possible, however some modifications or fabrication may be required for some vehicles. If you have any Questions or concerns we strongly suggest you contact a professional installation repair shop.

# 1964-75 GENERAL MOTORS

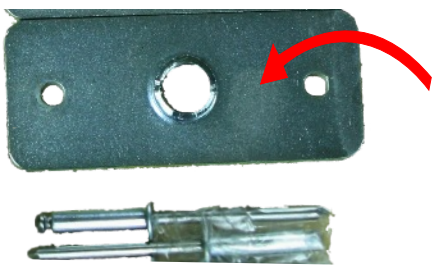
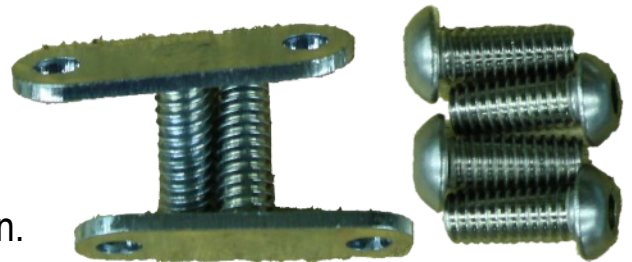
1. Remove old seatbelts. Clean any debris and rust out of threaded holes with a wire brush or thread chaser. If necessary, remove the front seats making sure to set the mounting bolts aside.



2. Most General motor vehicles after 1966 started to come with a shoulder belt or had the mounting holes installed. You will need to look behind the headliner to see if you have the factory shoulder belt mounting holes or if you will need to create a mounting point.

The image to the left shows a factory installed mount with headliner removed.

3. If your vehicle has the mount as shown in the photo above you will use the hardware piece shown to the right along with the mounting bolts. You will need to carefully cut the headliner to provide access for the shoulder loop mounting bolt later in the installation.



4. If your vehicle does not have the factory mount for a shoulder belt you will need to find a strong steel support in the roof area or B pillar (if equipped) and use the CA53 flat plate along with the pop rivets provided to attach the plate. Always check the clearance between any support braces and the roof/exterior body panel before drilling. Make certain that you will not impact the roof/exterior panel causing damage to the panel or the exterior paint. Some vehicles that require mounting in the B pillar may also require a slot be created in the pillar to slide the CA53 plate into. You may also need to drill 3 holes for the pop rivets and mounting bolt. Use the plate as a template. You will need to carefully cut the headliner to provide access for the shoulder loop mounting bolt later in the installation.

# 1964-75 GENERAL MOTORS

5. After completing the shoulder belt mount portion of the installation you can decide the best location for the retractor. In most cases the retractor is too large to fit in the factory lap belt mounting location so you will need to install the retractor in the rear seat floor area as close to directly below the shoulder belt mount as you can. If the retractor is slightly forward or back of the shoulder mount you will be fine, just don't mount it on a severe angle.



To mount the retractor, you will need to look under your vehicle in the area you which to install the mounting bracket to make sure there are no brake lines, fuel lines, wiring harnesses or interference with the frame. You will need a few inches of clearance to tighten the hardware under the car along with room to install the larger flat washer.

The retractor, 5" black anchor and mounting bracket will be assembled as shown below.



Once installed the black Anchor should be Installed pointing towards the front of the vehicle. The photo shows what the drivers side would look like. You can alter the angle based on your seat cushion angle as needed.



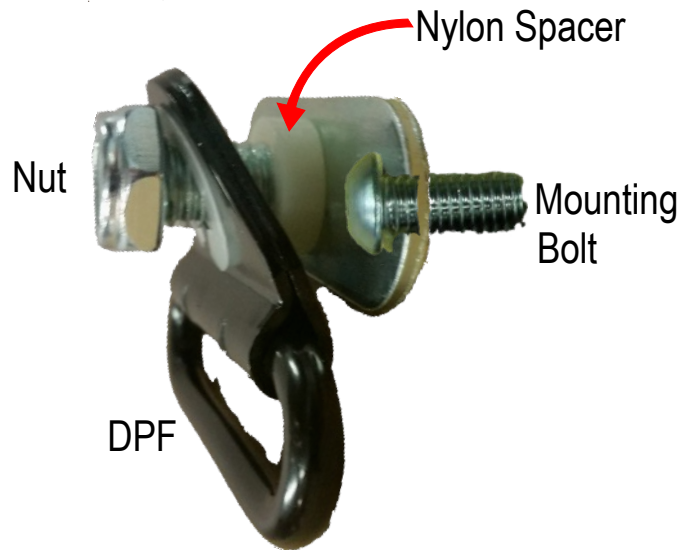
Use Camaro bracket in place of 90 degree bracket for all 1967-75 Camaro installations.

# 1964-75 GENERAL MOTORS

6. Once the retractor is installed you can bolt the door post fitting (shoulder loop) into the ceiling or B pillar location you created in steps 3 or 4.

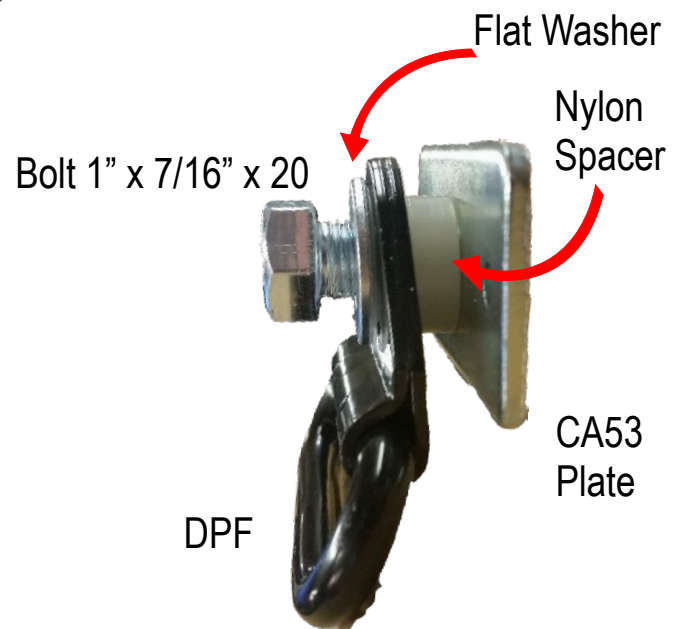


**Factory Mounting Design**



7. Now that the retractor is installed you can bolt in the buckles. If you have Factory mounting holes on the transmission tunnel than you should be able to bolt the new buckles in without using the 90 degree brackets provided with the hardware kit. If your car does not have mounting holes on the floor than you will need to determine the correct location for the buckles and follow the same procedure used for mounting the 90 degree bracket used on the retractor. Check under the car to make sure nothing is in the way first before drilling. Use the large flat washer under the car.

**CA53 Plate for Non Factory mounting**



### **Warranty:**

SEATBELT SOLUTIONS offers a one (1) year warranty on our products. The warranty covers defects in materials and workmanship. If, during the warranty period, the product fails under normal usage, because of a manufacturing defect, we will replace or repair the item after the unit has been returned to our facility for inspection and determination as to coverage.

*Our warranty is limited to the retractor and buckle assembly only.* The webbing material and associated hardware are *not covered* under our warranty.

To obtain repair or replacement under the terms of this warranty, please contact us via phone or e-mail and request a return authorization number. A copy of the original purchase receipt is required.

Our warranty expires if the seatbelt has been involved in an accident therefore the seat belt system cannot be warranted, repaired, or returned.

Seatbelt Solutions, LLC  
15835 Corporate Road N  
Jupiter, FL. 33478  
(561) 747-7165  
Email: [orders@seatbeltsolutions.com](mailto:orders@seatbeltsolutions.com)