

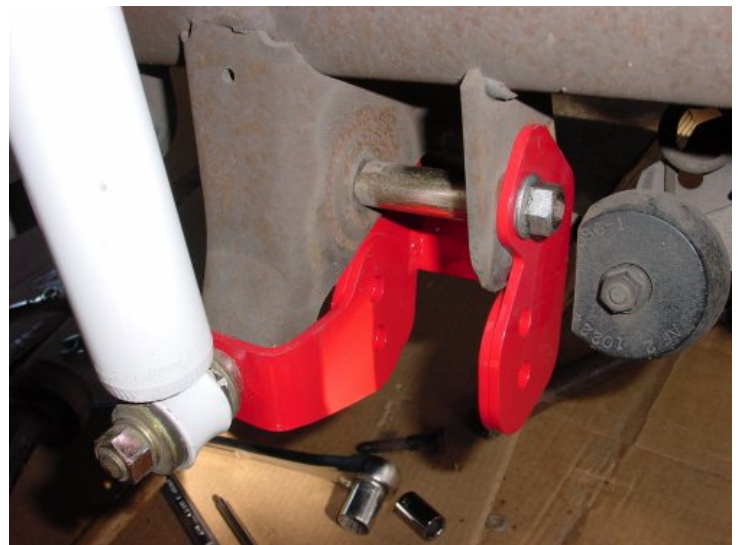
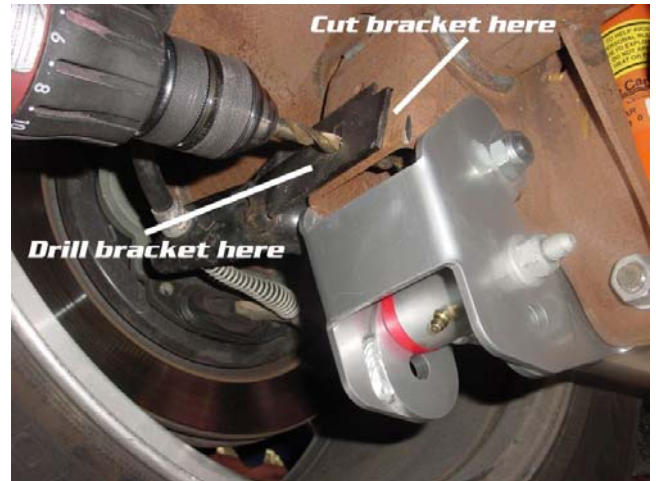


BOLT-ON CONTROL ARM RELOCATION BRACKETS

Part# CAB002

Installation:

1. Lift the rear of the vehicle by its axle and support it by the frame with jack stands. Using two 18mm wrenches, remove one of the rear control arm bolts and pull the control arm down, clear of the OE axle bracket.
2. On '97 and earlier models remove the OE caliper weights using a 15mm wrench. On '98 and newer models remove the parking brake cable from the cable bracket, then cut the rear of the bracket in half to remove (See image to the right). Slide the BMR dropped bracket over the OE mount until the top hole aligns with the factory-mounting hole (This may require a pry bar to help align). Insert the supplied spacer into the original control arm mount then insert the supplied bolt and nut but do not tighten yet.
3. Align the shock mount portion of the bracket with the shock mount on the rearend. Slide the shock bolt through rear end mount, relocation bracket mount, and shock (See image below).
4. Tighten all bolts.
5. Repeat the above steps for the other side.
6. On '97 and older models, use a hacksaw or grinder to remove approximately 1/4" off the side of both caliper weights to clear the new brackets, then re-install (see image below). On '98 and newer models, position the parking brake cable brackets into position, drill a hole and bolt them into place (as shown below).
7. Load the suspension by supporting the car by the rear end and then tighten all bolts. **NOTE:** Bushings must be tightened when the suspension is loaded to prevent bushing preload. Tightening the bolts with the rearend hanging can result in irregular ride height and premature bushing wear.



WWW.BMRFABRICATION.COM

This product is an aftermarket accessory and not designed by the vehicles manufacturer for use on this vehicle. As such, buyer assumes all risk of any damage caused to the vehicle/person during installation or use of this product.