

1982-2002 GM F-body Panhard Bar Relocation # 2062

NOTE: This kit requires either 2244 sway bar mounts or shimmed factory mounts with 2245 U bolts.



Box Contents

Qty	Part #	Description
1	2024- Same color as kit	Upper Panhard Brace
1	2024D- Same color as kit	Frame Spacer Sleeve
2	2062A- Black only	Frame Relocation Plate
1	2062_Tabs- Black Only	Axle Clamp w/ Tabs
1	2062- Black only	Axle Relocation Bracket
1	2311C	Axle Spacer Sleeve
1	2062H	Weld In Plate
2	2310D	Aluminum Spacer 0.42"
2	1039A	Aluminum Spacer 0.20"
1	2245E	U-Bolt for axle 2.75"
1	3060E	Hex Adjuster Sleeve
1	0028	RHT 5/8" Rod end
1	0029	LHT 5/8" Rod end
1	0030	RHT 5/8" Jam Nut
1	0031	LHT 5/8" Jam Nut
4	1000001	M12 Lock Nut
4	1000002	M12 Flat Washers
6	1000006	3/8" Flat Washers
5	1000022	9/16" Flat Washers

2	1000040	M14 Lock Nut
2	1000046	7/16" Fine Thread Nut
2	1000047	7/16" Lock Washer
4	1000054	M12 x 80mm bolt
1	1000057	M14 x 80mm bolt
1	1000060	M14 x 110mm bolt
2	1000081	3/8-16 x 1" bolt
2	1000101	3/8" Lock Nut

Notes: This kit will require the drilling of two 3/8 holes. UMI suggests 2244 sway bar mounts. Before installation, verify box contents are correct and read through instructions completely. Always ensure proper support when working under a vehicle. Use approved jack stands when using a floor jack as well as proper technique for securing your car while on a drive-on lift.

Tools required:

Adjustable Panhard Bar
SAE wrenches and sockets
Drill and 3/8" drill bit

Installation

1. Raise car to a comfortable working height using the method of your choice. Follow applicable safety procedures.
2. Locate and remove the existing panhard bar and panhard brace from the rear of the car.
3. Loosely install the UMI panhard brace to the frame using the three factory bolts as shown in Figure 1.
4. Use two 12mm bolts to loosely fasten the other end of the panhard brace to the passenger side mounting location, along with the two relocation plates and an anti-crush sleeve (See Figure 2).
 - Both relocation plates are to be placed on the reward faces of the frame mount.
 - The ani-crush sleeve is placed where the factory panhard brace was located, and the new UMI brace is placed where the factory panhard bar was located.
5. Place the panhard bar in the desired slot of the relocation plates and loosely bolt in place with an M14 x 80mm bolt.
6. Use an M12 x 80mm bolt to fasten the axle relocation bracket with the metallic anti-crush sleeve where the factory panhard bar was bolted to the axle (See Figure 3). Verify the bracket is as close to vertical as possible and tighten down in preparation for drilling.
7. Drill the first 3/8" hole that faces the front of the car. Use the holes in the bracket to center-punch a mark or simply drill with a long drill bit (See Figure 4).
8. Next, drill the 3/8" hole that faces the driver side and use the bracket hole as a guide for a center-punch or simply drill with a long drill bit (See Figure 5).
9. Loosen the axle relocation bracket and Insert a 3/8-16x1" bolt in the forward facing hole.
10. Use 3/8" washers as shims to fill the gap between the driver side hole and the frame (See Figure 6). Insert 3/8-16 x 1" bolt into drilled hole with shims and tighten both 3/8" bolts to 33 ft-lbs.

11. Tighten M12 x 80mm bolt to 72 ft-lbs.
12. Insert one end of the panhard bar in the desired slot of the axle relocation bracket with a M14 x 110 bolt.
13. Loosely install the axle clamp to the driver side of the axle tubing with the 7/16 lock washers and nuts. Ensure the tabs are facing rearward and U-bolt ends facing down.
14. Install rod ends and jam nuts into both ends of the 3060E hex sleeve and install it onto the M14 x 110 bolt as shown in Figure 7. (Be sure to use the appropriate short spacers and 9/16" washers)
15. Use an M12x80mm bolt, M12 washers, and an M12 lock nut to bolt the 3060e hex sleeve up inside the double shear tabs on the "shark tooth" axle clamp. (Be sure to use the the appropriate larger aluminum spacers) See Figure 8.
16. Use the supplied U-bolt and 7/16" hardware to attach the axle clamp. Butt up axle clamp to the differential housing if possible then tighten 7/16" nuts moderately tight with hand tools.
17. Tighten down all bolts moderately tight with hand tools, or follow the torque table below.
18. Lowering the Bar will increase rear body roll and therefore adding rear grip. Raising the bar will decrease rear body roll and increase the ability to throttle steer.

Bolt Size	Final Torque (ft-lbs)
3/8"	35
M10 (factory)	38
M12	72
M14	105

IMPORTANT: FOR EXTREME RACING APPLICATIONS, UMI PERFORMANCE RECOMMENDS WELDING IN PLACE, THE 2062A FRAME RELOCATION PLATES, THE 2062 AXLE RELOCATION BRACKET, AND THE 2062H PANHARD MOUNT SUPPORT (SEE FIGURE 10). THIS PROVIDES THE MOST SECURE INSTALLATION AND THE BEST SUPPORT DURING HARD CORNERING.



Figure 1

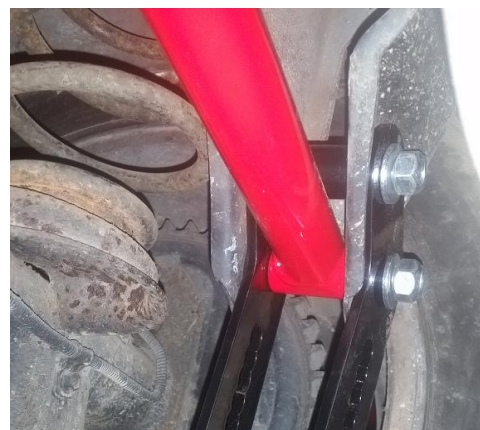


Figure 2



Figure 3



Figure 4



Figure 5



Figure 6

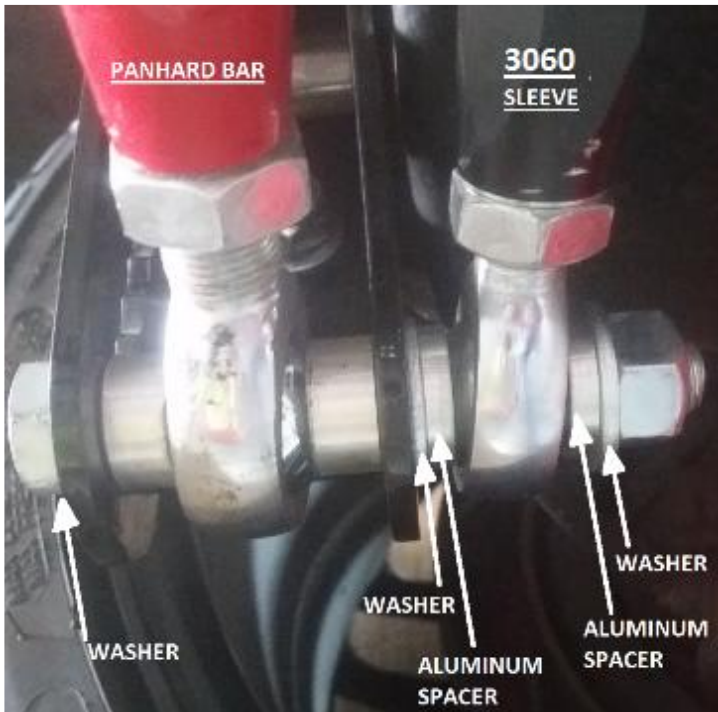


Figure 7



Figure 8



Figure 9

NOTE: Notice the lowered sway bar mounts. (Kit #2244)



Figure 10 (Directly under the axle)

OPTIONAL

Weld-in for extra strength and support to the panhard mount.

DISCLAIMER OF WARRANTY

THE PURCHASER ACCEPTS ALL RESPONSIBILITY FOR THE FINAL USE OF THE PRODUCTS PURCHASED AND SHALL HOLD UMI PERFORMANCE INCORPORATED AND ITS REPRESENTATIVES HARMLESS IN ANY LEGAL PROCEEDING ARISING FROM THE USE OF SUCH PRODUCTS.

UMI PERFORMANCE INCORPORATED DOES NOT WARRANT, GUARANTEE, OR MAKE ANY REPRESENTATION REGARDING THE USE, OR THE RESULT OF THE USE OF ANY PERFORMANCE PRODUCT MANUFACTURED OR DISTRIBUTED BY UMI PERFORMANCE INCORPORATED. PURCHASER ASSUMES THE ENTIRE RISK AS THE RESULT AND PERFORMANCE OBTAINED FROM THE INSTALLATION AND USE OF SAID PERFORMANCE PRODUCTS. UMI PERFORMANCE INCORPORATED ASSUMES NO RESPONSIBILITY FOR AND HEREBY DISCLAIMS ALL WARRANTIES, ORAL OR WRITTEN, EXPRESS OR IMPLIED INCLUDING WITHOUT LIMITATION, THE WARRANTIES OF MERCHANTABILITY AND OF FITNESS FOR A PARTICULAR PURPOSE.

ALL PARTS ARE WARRANTED TO BE FREE OF DEFECT AT THE TIME OF PURCHASE. WARRANTY IS ONLY EXTENDED TO REPLACEMENT OF PARTS FROM UMI PERFORMANCE INCORPORATED AND DOES NOT COVER LABOR, TOWING OR ANY OTHER DIRECT OR INDIRECT COST. UMI PERFORMANCE INCORPORATED IS NOT RESPONSIBLE FOR ANY CONSEQUENTIAL DAMAGE, EXPENSE OR INJURY ARISING FROM THE USE, MISUSE OR IMPROPER INSTALLATION OF ANY PRODUCT MANUFACTURED AND/OR SOLD BY UMI PERFORMANCE INCORPORATED.

Item # 2062

82 – 02 F-Body Panhard Bar Relocation
UMI Performance Inc.
Made in Philipsburg, PA – USA



509 Hemlock St
 Philipsburg, PA 16866
 Ph- 814.343.6315 Fax- 814.343.6318

Installation Instructions

support@umiperformance.com
 www.umiperformance.com

2062 Kit Checklist

Checked	Part Number
<input type="checkbox"/>	(1x) 2024 Panhard Brace Black Or Red
<input type="checkbox"/>	(1x) 2024D Spacer Sleeve Black or Red
<input type="checkbox"/>	(2x) 2062A Panhard Relocation Plates- Black
<input type="checkbox"/>	(1x) 2062_Tabs Sway Bar Axle Clamp w/ Tabs Black
<input type="checkbox"/>	(1x) 2062 Panhard Axle Bracket- Black
<input type="checkbox"/>	(1x) 2245E Axle U-Bolt 2.75"
<input type="checkbox"/>	(1x) 2311C Axle Spacer Sleeve
<input type="checkbox"/>	(1x) 2062H Weld In Plate- Bare
<input type="checkbox"/>	(2x) 2310D Aluminum Spacer 0.42
<input type="checkbox"/>	(2x) 1039A Aluminum Spacer 0.20
BUILD THIS KIT	
<input type="checkbox"/>	(1x) 3060E Hex Adjuster Sleeve- Black
<input type="checkbox"/>	(1x) 0028 RHT 5/8Rod End
<input type="checkbox"/>	(1x) 0029 LHT 5/8Rod End
<input type="checkbox"/>	(1x) 0030 RHT 5/8Jam Nut
<input type="checkbox"/>	(1x) 0031 LHT 5/8Jam Nut
<input type="checkbox"/>	Hardware Kit
	(4x) 1000001 M12 Lock Nut
	(4x) 1000002 M12 Flat Washer
	(6x) 1000006 3/8Flat Washer
	(5x) 1000022 9/16Flat Washer
	(2x) 1000040 M14 Lock Nut
	(2x) 1000046 7/16Fine Thread Nut
	(2x) 1000047 7/16Lock Washers
	(4x) 1000054 M12 x 80mm bolt
	(1x) 1000057 M14 x 80mm bolt
	(1x) 1000060 M14 x 110mm bolt
	(2x) 1000081 3/8-16 x 1 bolt
	(2x) 1000101 3/8Lock Nut