

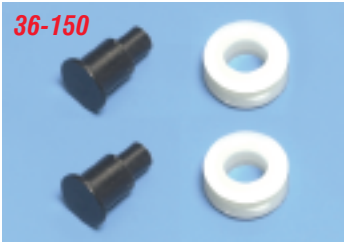
1955-64 WINDOW ROLLER INSTALLATION



Randy Irwin - Technical Writer

Randy has been involved in the Chevy parts business for over 25 years. He is a wizard at creating, making and modifying custom parts for Chevys.

The rollers on a window regulator or frame really never roll, they more or less slide in the roller channel. After many years of rolling the windows up and down, flat spots will develop on one or both sides of the roller. The roller will become sloppy in the roller guides or even break causing the window to be hard to roll up or down. Replacing the rollers and rivets is a very simple procedure. With new rollers installed the windows will work much, much smoother.



Parts Needed:

36-150 Window Rollers & Rivets

To order parts call 1-800-456-1957 or visit ClassicChevy.com

Tools Needed:

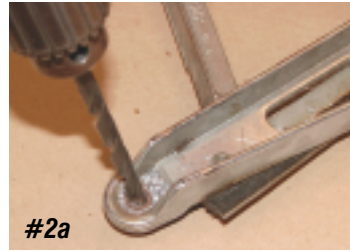
Hammer
Punch: Tapered
Punch: Flat
Vise

Time Frame:

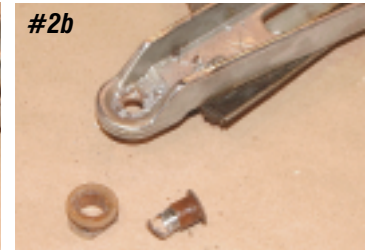
1-Hour



Photo #1: Here is a photo with normal wear on the original nylon roller.



#2a



#2b

Photo #2a & 2b: The roller is held to the window frame or regulator with a tube rivet. Using a 1/4" drill bit, drill out the rivet.

Photo #3: The roller and rivet kit P/N 36-150 includes two rollers and two tube rivets.



#4a



#4b



#4c



#4d



#4e

Photo #4a & 4b & 4c & 4c & 4d & 4e: With the roller and rivet in place, first use a tapered punch and flare out the tube end of the rivet. Next using a flat punch, smash the edges of the tube rivet down tight on the window frame. This will center and tighten the rivet in the hole on the window frame or regulator.



Photo #5: Be sure to apply some white lithium grease on the new rollers before installing the frame or regulator back into the car. This installation procedure may be used on window frames as well as regulators. Good Luck! ✓