

# PT CRUISER DOOR



## DOOR LOCK KIT

PTCCL / PTCCK



1. Remove front door panels by removing the screws that attach the panels.



1a. Remove screw #1 from behind door handle, on each side.



1b. Remove screw #2 from upper right of panel.



1c. Remove screw # 3 from bottom right of panel.



1d. Remove screw #4 from bottom left of panel.



1e. Remove screw #5 from right bottom of door handle.



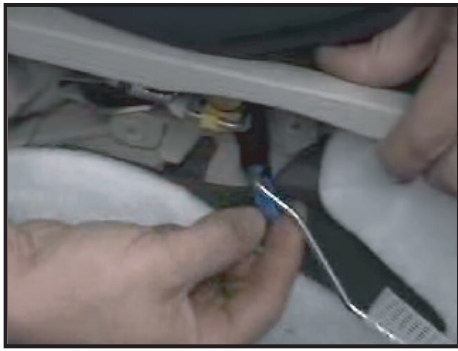
1d. Remove screw #6 from bottom left of door handle.



2. Gently pull back mirror switch cover, and remove.



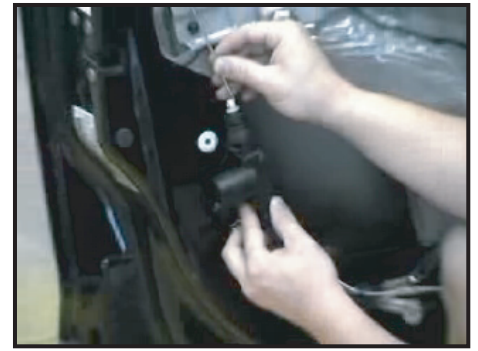
3. Lift panel and move away from door...



4. Disconnect existing control arm and remove panel.



5. Gently peel back your vapor barrier.



6. Align front actuator.



7. Mount front actuator; Drill top mounting hole...



8. Drill bottom mounting hole...



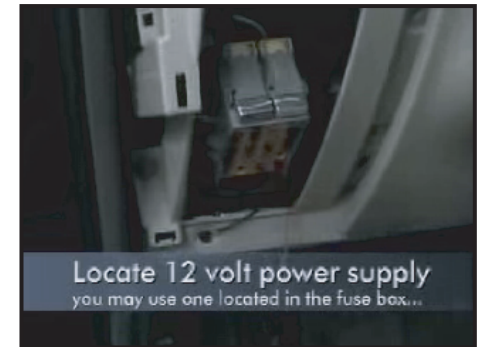
9. Set actuator in place...



10. Attach actuator with first screw...



11. Secure with second screw...



Locate 12 volt power supply  
you may use one located in the fuse box...

12. Find a 12 volt power supply, such as the one in your fuse box.



13. Connect the red wire to the constant 12v source. This source will have 12v at all times.



14. View of right rear door.



15. Next, remove reardoor panels: First, remove small window panel.





**16. Remove Screw from bottom right of door handle.**



**17. Remove screw from bottom left of door handle.**



**18. Remove screw from behind door release lever.**



**19. Remove screw from lower right of panel.**



**20. Remove screw from upper right of panel.**



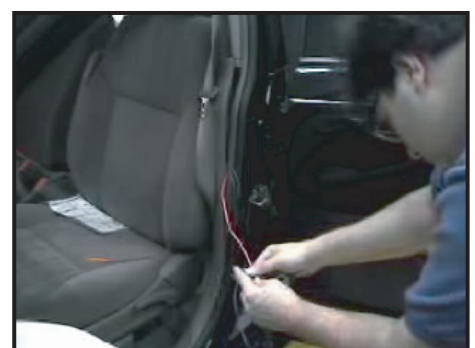
**21. Remove panel carefully.**



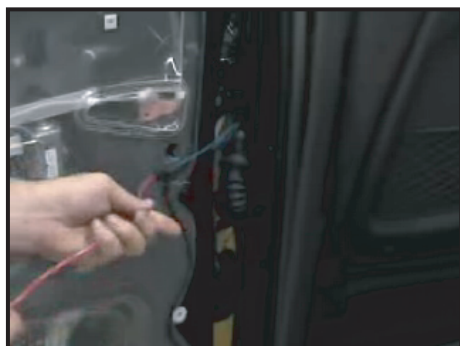
**22. Run wires through door jam...**



**23. Run a stiff wire through the door jam...**



**24. Temporarily tape it to the wire you want to run.**



**25. Pull back through door jam and remove tape.**



**26. Mount rear actuator; Drill front hole...**



**27. Drill rear hole...**



**28. Put actuator in place on bracket.**



**29. Attach first screw in bracket.**



**30. Attach second screw in bracket.**



**31. Attach third screw to factory rod.**



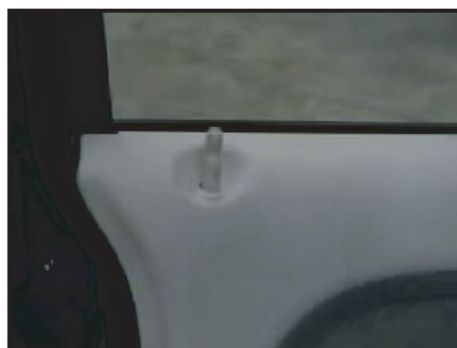
**32. Wires for rear doors are reversed.**



**33. Green to blue...**



**.34. ..and Blue to Green.**

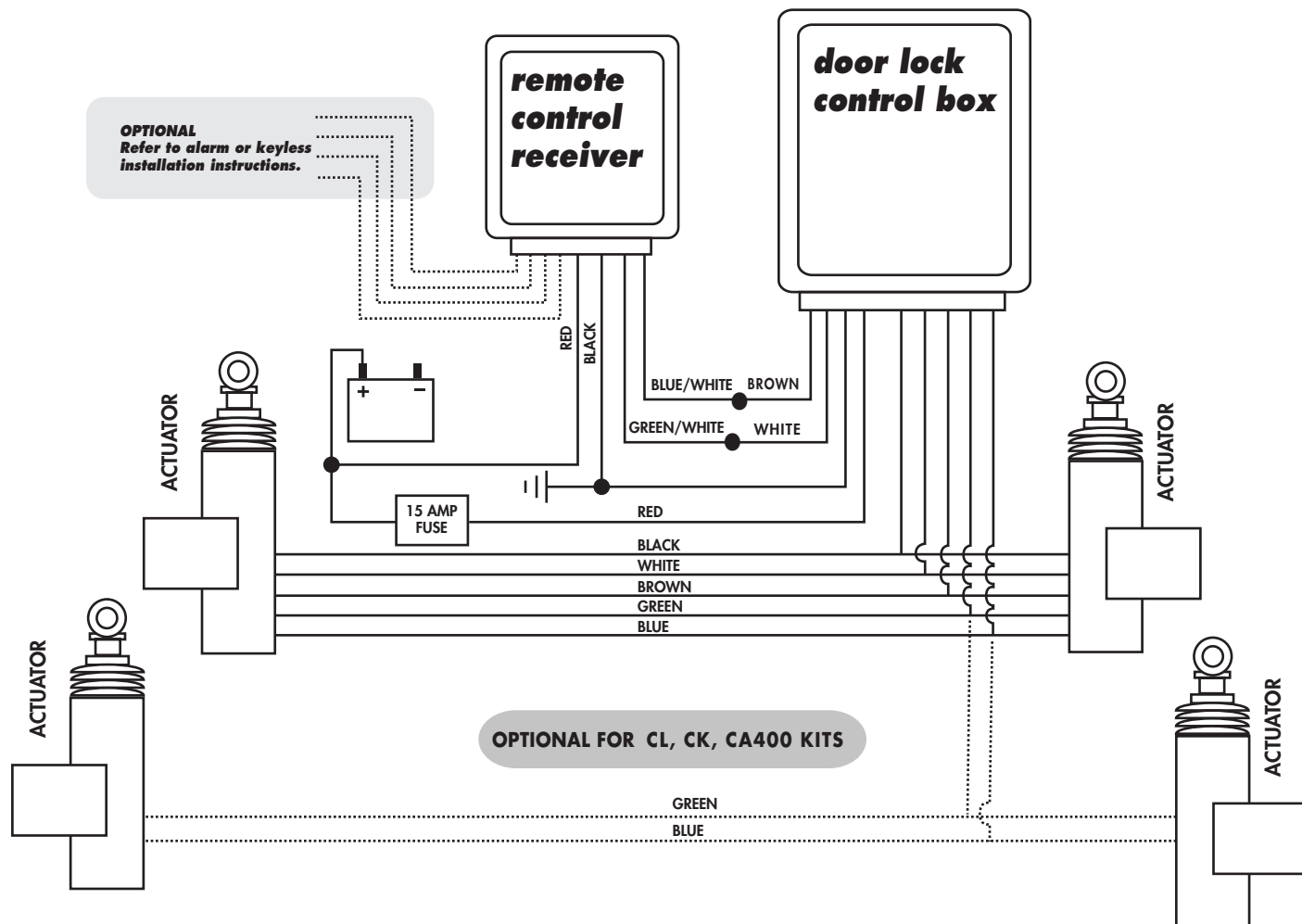


**35. Test system functionality.**

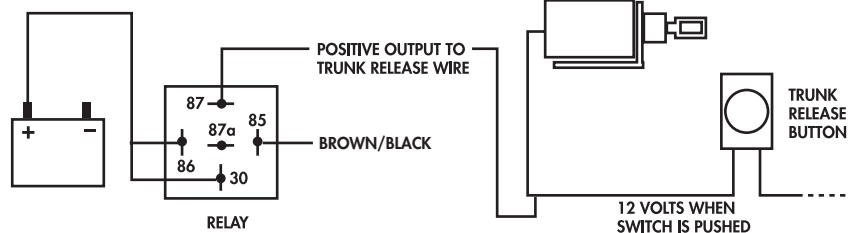


**40. Finish running and securing the wires and you are almost done!!!**

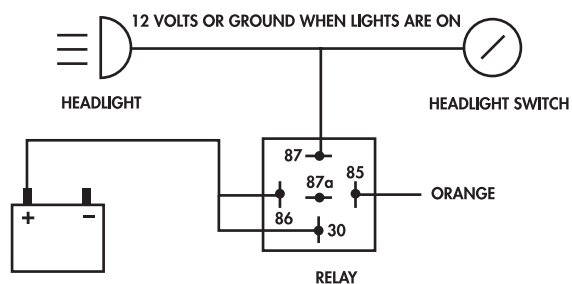




### TRUNK/SHAVED DOOR HANDLE TRIGGER



### PARKING LIGHTS



**NOTE:** If parking lights are negative trigger, then connect 30 to chassis ground.

### STARTER/IGNITION KILL

