



## JK FRONT QUICK DISCONNECTS

**THANK YOU FOR CHOOSING ROUGH COUNTRY FOR YOUR SUSPENSION NEEDS.**

Rough Country recommends a certified technician install this system. In addition to these instructions, professional knowledge of disassemble/reassembly procedures as well as post installation checks must be known. Attempts to install this system without this knowledge and expertise may jeopardize the integrity and/or operating safety of the vehicle.

Please read instructions before beginning installation. Check the kit hardware against the parts list. Be sure you have all needed parts and know where they go. Also please review tools needed list and make sure you have needed tools.

### PRODUCT USE INFORMATION

.Rough Country makes no claims regarding lifting devices or components and excludes any and all implied claims. We will not be responsible for any product that is altered. If questions exist we will be happy to answer them concerning the design, function, and correct use of our products.

### NOTICE TO DEALER AND VEHICLE OWNER

Any vehicle equipped with any Rough Country product should have a "Warning to Driver" decal installed on the inside of the windshield or on the vehicle's dash. The decal should act as a constant reminder for whoever is operating the vehicle of its unique handling characteristics.

#### Tools Needed:

16mm Socket / Wrench  
 18mm Socket / Wrench  
 19mm Socket / Wrench  
 21mm Wrench  
 1/2" Socket  
 Small Phillips Screwdriver  
 17/64" Drill Bit  
 Drill Motor  
 Center punch

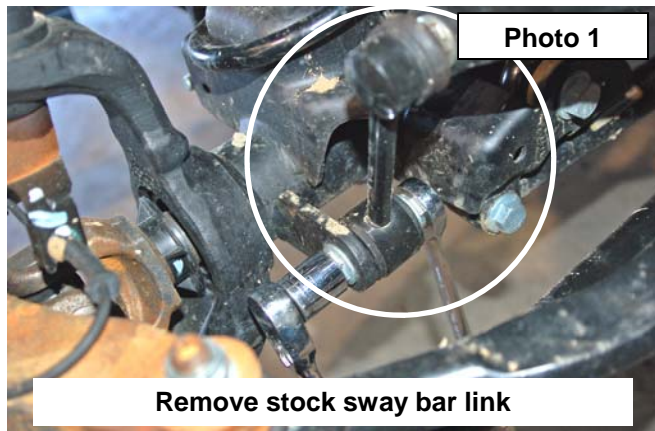


#### Kit Includes:

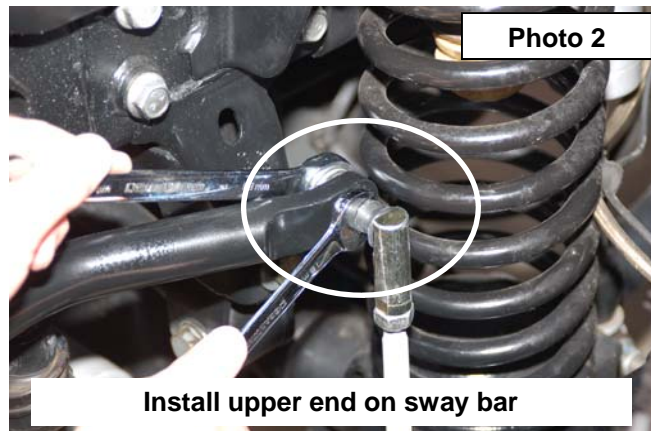
Dr Frame Bracket  
 Pass Frame Bracket  
 5/16" x 1" Self Tap Bolt (4)  
 Link Body (2)  
 Link End (2)  
 Mounting Pins (2)  
 1/2" Nut (2)  
 1/2" Flat Washer (2)  
 12mm Jam Nut (2)  
 12mm Lock Nut  
 Hitch Pin (2)

### INSTALLATION INSTRUCTIONS

1. Remove the stock sway bar links from the axle and the sway bar using a 21mm wrench on the sway bar and a 18mm socket / wrench on the axle. **See Photo 1.** The stock hardware will not be reused.
2. Assemble the supplied jam nut and end link on the sway bar link body. Adjust the sway bar to approx 11" for a 2.5-6" kit measuring end to end. Tighten the end and jam nut using a 18mm wrench.
3. Install the new sway bar link on the factory sway bar as shown in **Photo 2** with the supplied 12mm Flange lock nut using a 16mm & 18mm wrench.

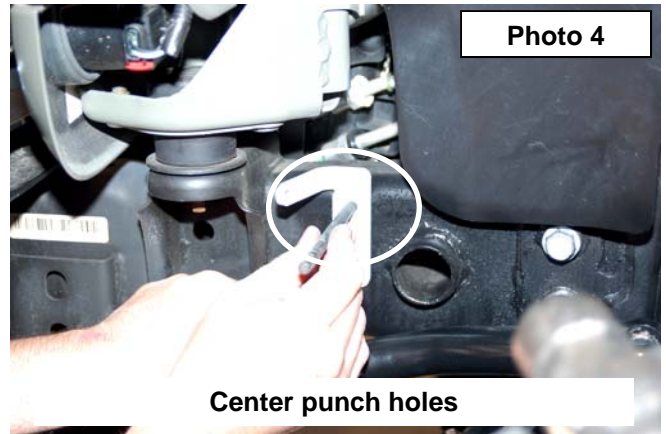
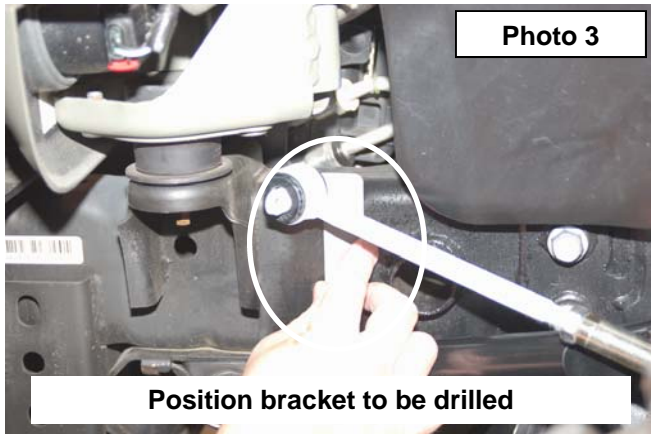


Remove stock sway bar link

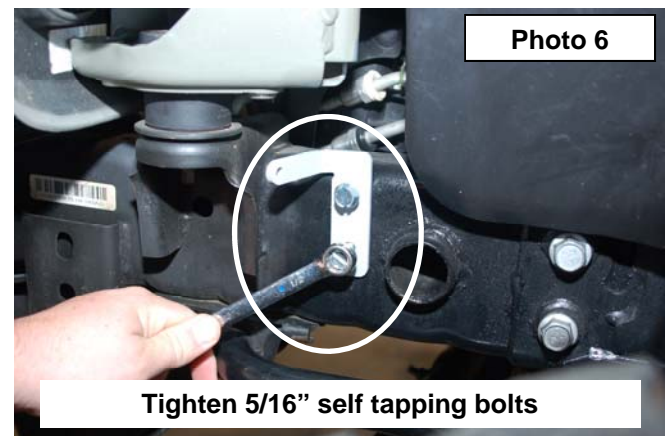
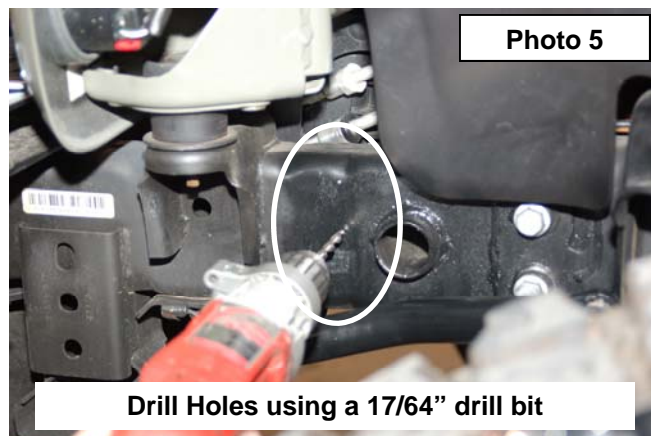


Install upper end on sway bar

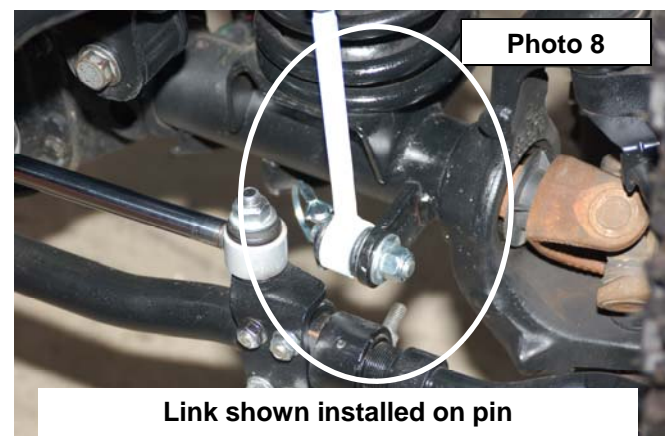
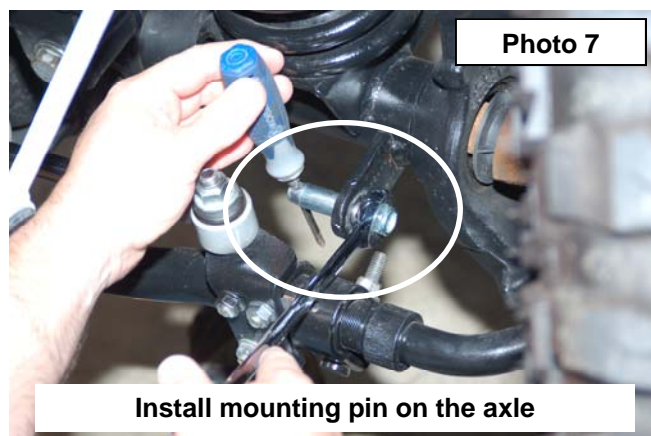
3. Install the new sway bar link on the sway bar bracket and swing up the assembly to the frame rail. **See Photo 3.** Remove the sway bar link from the bracket while holding the bracket in place.
4. Mark the holes to be drilled and remove the bracket from the frame. **See Photo 4.**



5. Drill the two holes per side using a 17/64" drill bit. **See Photo 5.** Be sure to only drill through the outside of the frame rail.
6. Install the frame bracket with the supplied 5/16" self tapping bolts (2 per bracket) using a 1/2" wrench as shown in **Photo 6.**



7. Install the supplied mounting pin as shown in **Photo 7** and tighten using 19mm socket / wrench.
8. Swing the new sway bar link down and secure on the mounting pin using the supplied quick disconnect pin. See **Photo 8.**



#### POST INSTALLATION INSTRUCTIONS

1. Check all fasteners for proper torque. Check to ensure there is adequate clearance between all rotating, mobile, fixed and heated members.
2. All components must be retightened after 500 miles, and every three thousand miles after installation.

THANK YOU FOR CHOOSING ROUGH COUNTRY FOR YOUR SUSPENSION NEEDS

**ROUGH**  
**COUNTRY**  
SUSPENSION SYSTEMS