

**SMOKED OUT  
FIND THE LEAK.  
CLEAR THE CODE.  
SMOKE THE TEST.**



## 6522 OTC LEAK TAMER 30-DAY SATISFACTION GUARANTEE

It's a straight forward guarantee. Buy it, try it for 30-days, if you don't find that it helps you get your job done you can return it to your participating authorized dealer and get your money back.

Put better technology and portability in your shop with OTC's new and improved smoke machine. This unit is half the size of its predecessor, but twice as mighty with more powerful features.

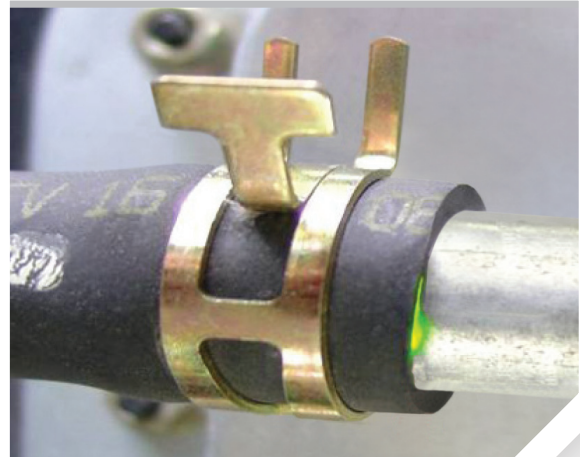


## OTC LEAK TAMER FEATURES

- UltraTrace UV® Dye - the only OE approved solution.
- New smoke flow control adjusts for specific applications.
- Detects microleaks™ to and below .010".
- Glow plug technology – longer lasting more reliable smoke generation than competitors.



Install appropriate port adapter and insert smoke solution supply hose into adapter.



Ultraviolet fluorescent dye fingerprints the exact location of a leak.

## 6522 KIT CONTENTS

- Leak Tamer Unit
- White/UV Combination with Laser Pointer
- UV Glasses for viewing UltraTrace UV® dye
- Service Port Adapter
- Exhaust Adapter Cone
- Cap Plug Adapters
- Schrader® Removal/Installation Tool
- UltraTrace UV® Smoke-Producing Solution



## ACCESSORY / REPLACEMENT PARTS

**6522-1** UltraTraceUV® (8 oz. / 236 ml) patented solution is the only Automaker-approved smoke-producing solution in the world. Contains a special dye that deposits at the exact location of a leak. Each bottle will perform approximately 300 tests. Part No. is for one bottle, two bottles included with 6522.



**6522-2** Inert Gas Pack Kit connects directly to fitting on back of LeakTamer 6522. Includes preset CO2 regulator with cylinder fitting, 20 oz. liquid CO2 cylinder, pressure gauge, universal push-on female coupler accommodates both automotive and industrial male fittings (Cylinder arrives empty) Performs approx. 25-50 full cycle EVAP tests per 20 liquid oz. cylinder.



**6522-3** Combination Light for easier smoke location and ultraviolet (UV) light, to highlight the fluorescent dye deposited at the exact location of a leak. Also has laser pointer. Includes batteries and glasses.



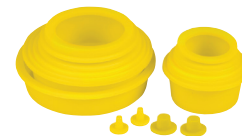
**6522-4** Standard Size Service Port Adapter.



**6522-5** Schrader® Removal/Installation Tool.



**6522-6** Cap Plugs Kit. Used for sealing some systems during leak testing.



**6522-7** Universal Fuel Neck Adapter fits the majority of vehicles. Allows access to fuel tank for evaporative system testing.



**6522-8** BMW and MINI Fuel Neck Adapter. Allows access to fuel tank for evaporative system testing.

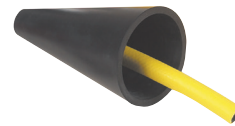


## ACCESSORY / REPLACEMENT PARTS

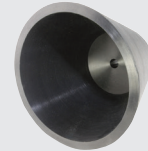
**6522-9** Smoke Diffuser locates leaks around doors, windows, sunroofs, trunk compartment seals, EV vehicles' battery modules, or any closed system that can be pressurized from the inside and observe the smoke disturbance from the outside.



**6522-10** Cone Adapter (standard) for introducing smoke into induction or exhaust system. 1" x 3.5" & 6" long (25.4 mm x 89 mm x 152 mm).



**6522-11** Cone Adapter (Large) for introducing smoke into induction or exhaust system. 3.5" x 6" & 4.6" long (89 mm x 152 mm x 144 mm).



**6522-12** Replacement Dipstick (for 6522).



**6522-13** Replacement smoke supply hose and Delrin® Nozzle.



**6522-14** Delrin® Nozzle.



**6522-15** Flow meter red pointer flag. For easy viewing of flow meter measurements.

